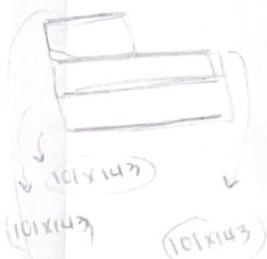


1" = 30'

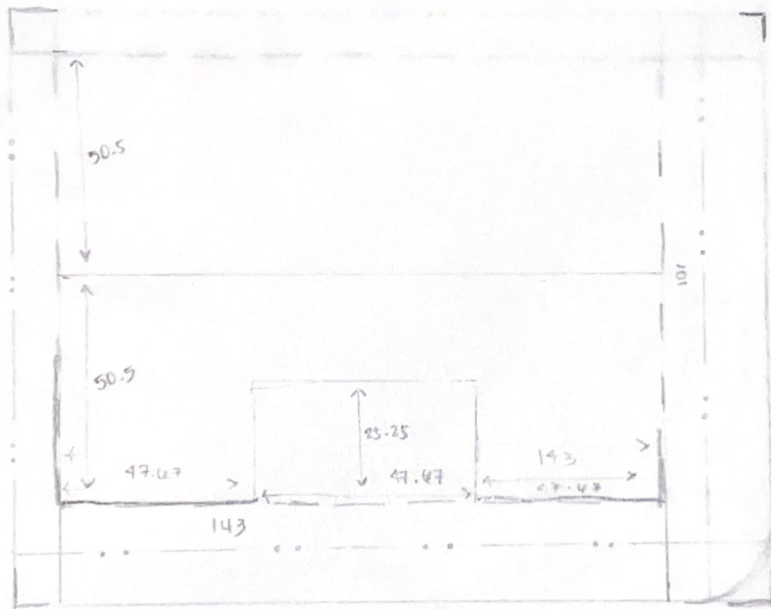
BNSG



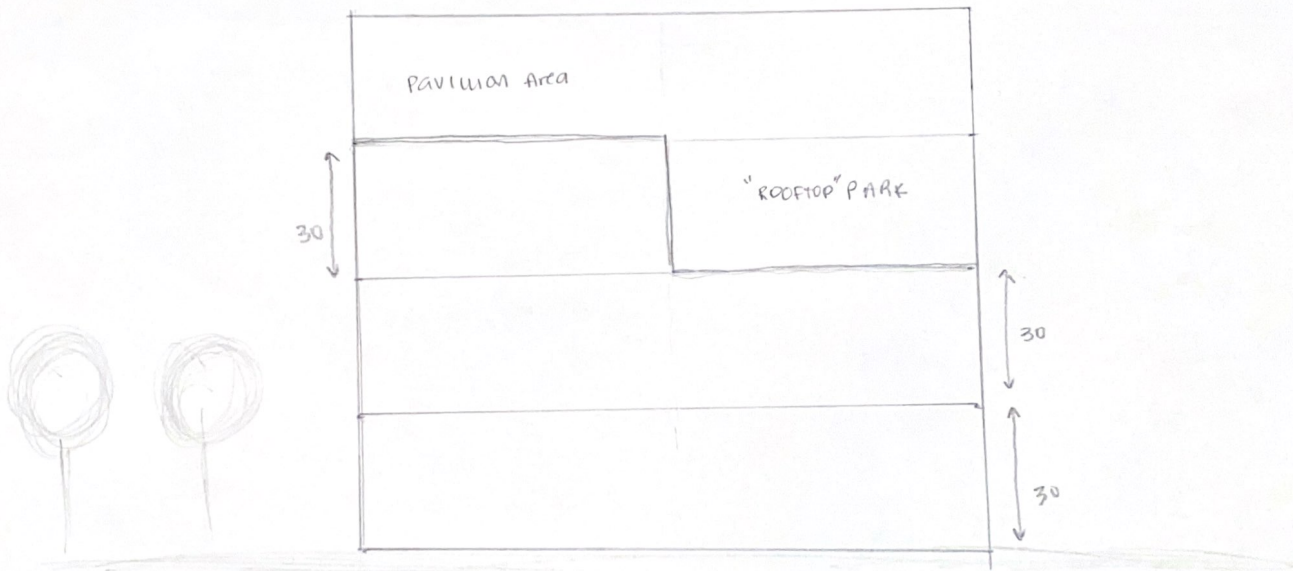
$101 \times 143$   
 $101 \times 143$   
 $101 \times 143$   
 $50.5 \times 143$  → floors  
 $(\text{area of void}) \times 3$   
 $(25.5 \times 47.67) \times 3$   
 $= -3646.74$

1-3)  $10,790.24$   
 4)  $50.5 \times 143$  →  $7221.5$

TOTAL AREA  
 $18,517.74$  Capitol VIEW (N)

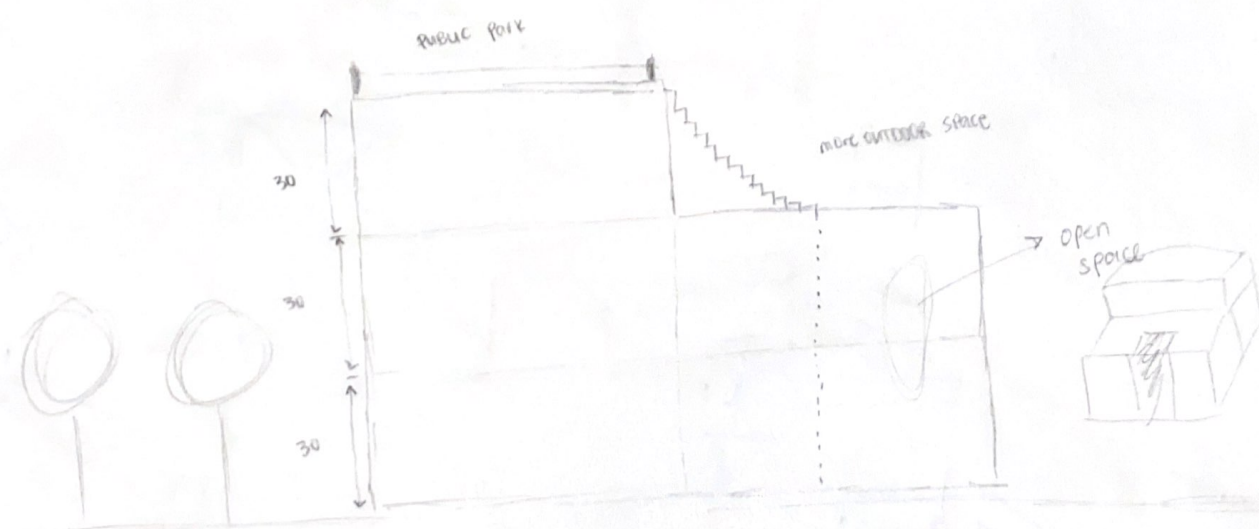


1" = 8'



ELEVATION

(design)



elevation