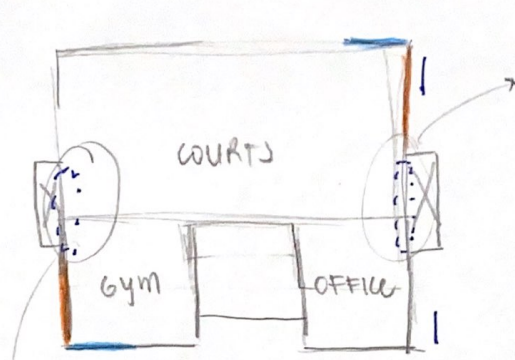
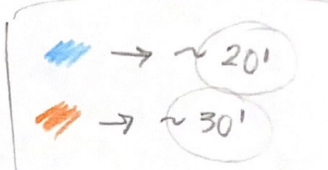


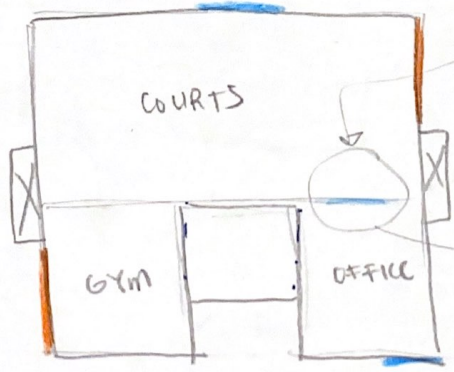
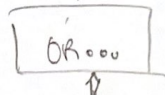
Billboards
Screen (?)



half steel/half concrete.



→ good candidate



if it touches
concrete, it's
concrete

Blockite

$(143)(20\%)$ two
= ~30ft

SMALLITE

$(101)(20\%)$ two
= ~20'

- * NON earthquake zone
- * NON hurricane zone
- * JUST COLD WINTERS.

CHOSEN LATERAL

