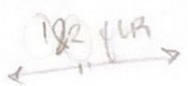
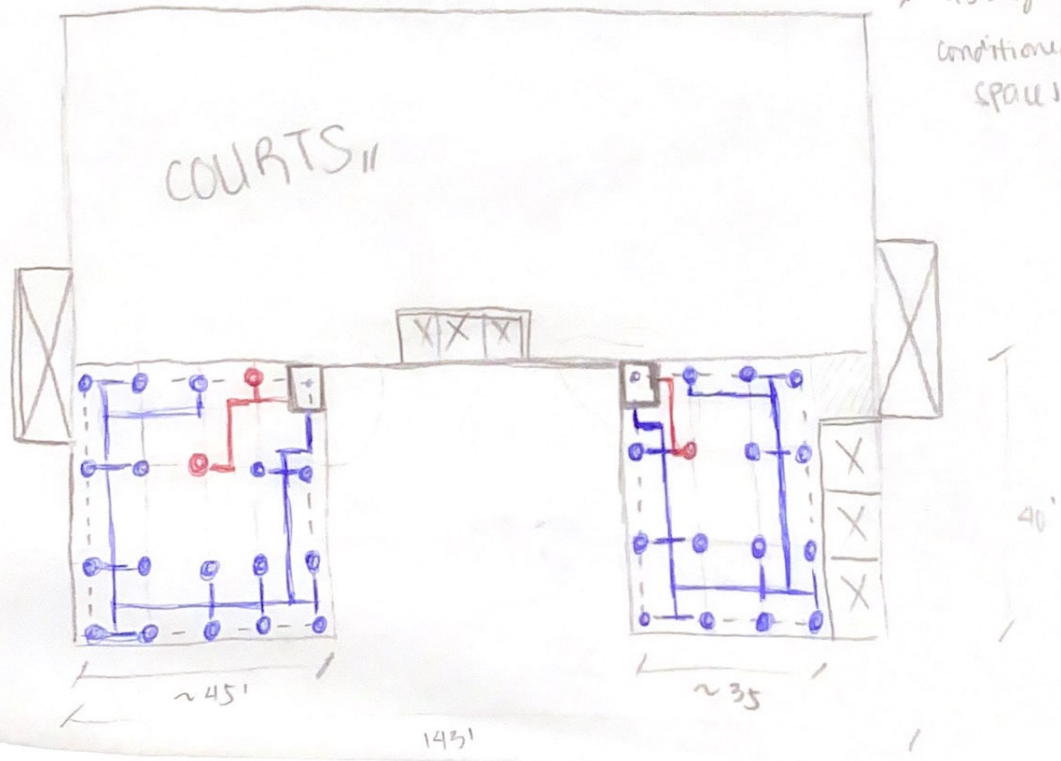


$45 - 3(2) = \sim 4$  bays



\* 2 story conditioned space

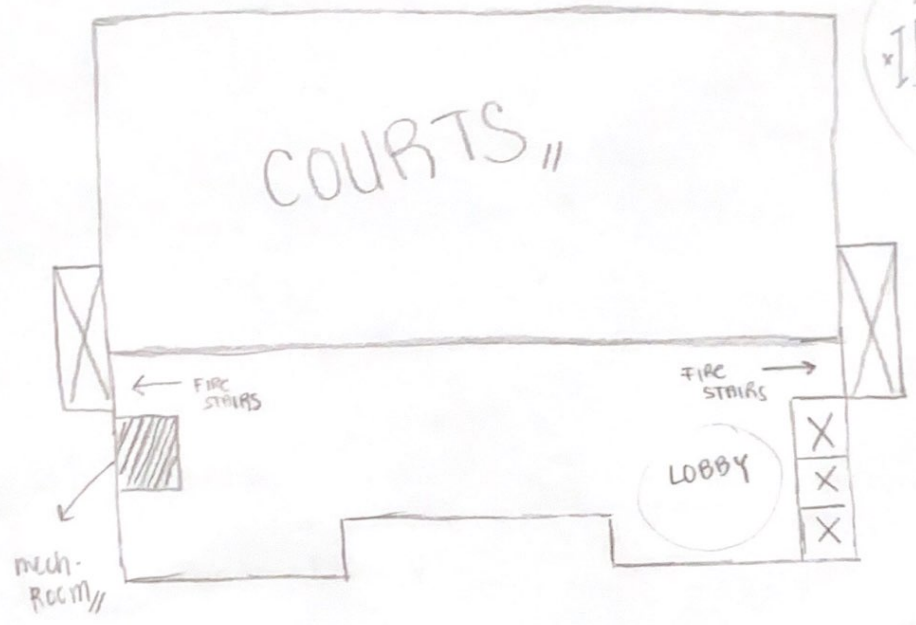
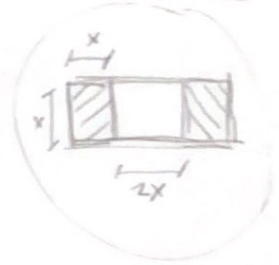


145'

tot. sq ft:  $(40)(142) = (5680) - (576) - \text{elevators} \Rightarrow \sim 5,000 \text{ sq ft / floor}$   
 $(5,000) \times (4 \text{ floors}) = 20,000 / 350 = 57 \sim 60 \text{ tons}$

COIL:

$\pm 5,000 / 350 \sim (14 \text{ tons}) (400) = 5660 / 500 \text{ (ft/min)} = \sqrt{11.2} \sim 3.5 = \frac{D}{3'6''} \times 3'6''$



$143 - 3(2) = 137 / (10 \text{ to } 15) \sim 17 \parallel \text{ Bays}$   
 $40 - 3(2) = \sim 3 \parallel \text{ Bays}$

[3rd floor → 4th floor]

